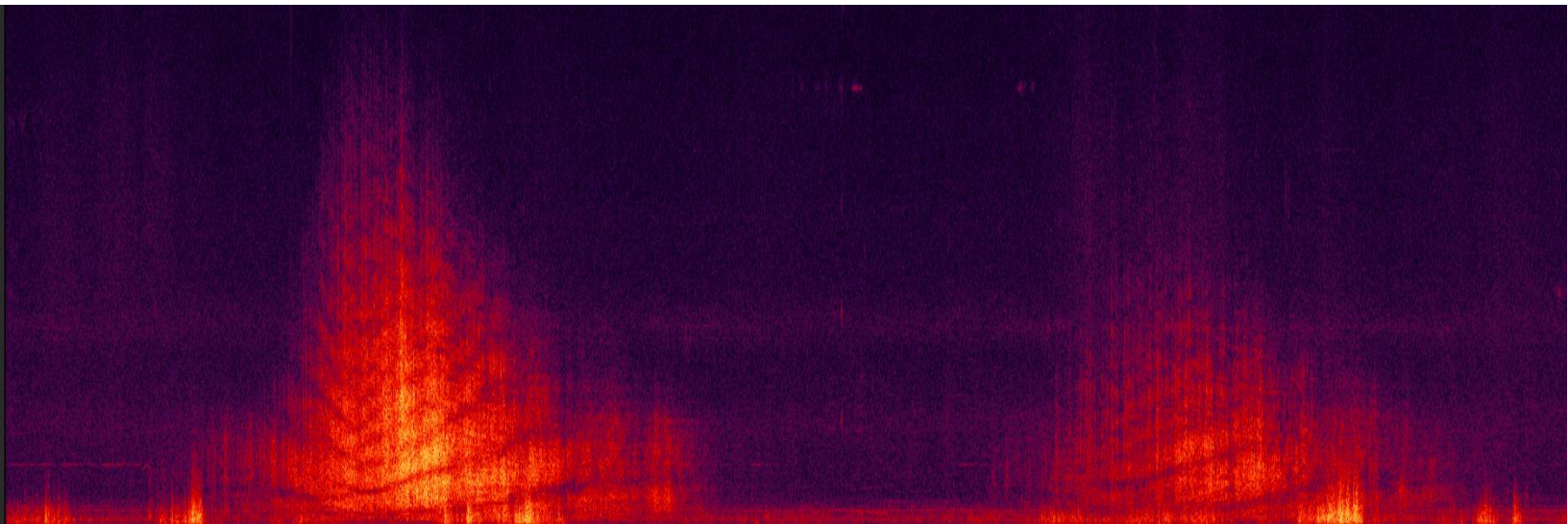


Impact of military flights on Olympic Peninsula soundscapes



Initial Summary of Findings

June 4, 2019

**Lauren Kuehne, MSc
Research Scientist**

**University of Washington's College of the Environment
School of Aquatic and Fishery Sciences
1122 NE Boat Street
Seattle, WA 98105**

Executive Summary

Military activity over the Olympic Peninsula has been undergoing transition over the past decade due to changes in aircraft used and operations from nearby facilities, resulting in reported increases in overall duration and levels of noise experienced by residents and tourists. Operations are slated to increase in the future, and are currently being evaluated as part of an Environmental Impact Statement under NEPA. However, given the lack of any on-the-ground monitoring that can establish current levels of noise experience on the Peninsula, evaluation of impacts on people and wildlife are difficult if not impossible to assess. The objectives of this study were to conduct monitoring and collect acoustic data to provide that baseline data, calculate metrics that could begin to establish current contributions of military aircraft on the soundscape, and provide context to evaluate proposed increases. We collected and processed 40 days of audio data collected in four seasons at three locations on the west side of the Olympic Peninsula. Locations were within and just adjacent to the Olympic Military Operations Area (MOA).

We determined that 85% of all audible air traffic was military, suggesting that changes in military operations will play a dominant role in dictating the future soundscape of the region. Percent time audible varied by location, but all sites exhibited strong peaks during daytime hours when military activity was concentrated. Across all recording days, the percent time audible during daytime hours averaged 9-17% depending on the location and hour, but routinely approached or exceeded 20% within some sampling periods. Individual locations can experience large numbers of disturbance events associated with flight activity, with 80-100 events recorded in some locations on a single day. The impact of military aircraft on any given day and hour were correlated at the three locations across distances up to 51 km, indicating the broad geographic reach of operations. The location which was outside of the MOA experienced substantial noise (9-12% audible during daytime hours), indicating that the noise footprint extends well beyond the MOA and has the potential to impact a very large proportion of Olympic National Park as well as other areas outside of the MOA.

Importantly, in this study we also demonstrate the feasibility and utility of on-the-ground monitoring to advance practical soundscape management. By measuring the noise frequency and levels likely to be currently experienced, we establish a basis for inquiry into the specific nature of proposed increases in flight operations and how they will be realized on the landscape. This is the only way that the potential impacts and consequences of noise can be adequately assessed for people and wildlife, as well as providing a necessary basis for appropriate management of the soundscape as a common-pool resource that is integral to and integrated with other land use planning and goals.

Introduction

Military activity over the Olympic Peninsula has been undergoing transition over the past decade due to changes in operations and training for personnel out of the Naval Air Station Whidbey Island (“NASWI”). Although naval flights have been operating in the area for decades, the transition from Northrup Grumman EA-6B (aka “Prowler”) to Boeing EA-18G (“Growler”) aircraft in past years has been identified as a pivot point in the level of noise experienced by residents and visitors to the Olympic Peninsula. National consolidation of training for Growlers to NASWI and the recent addition of 36 Growler jets, increasing the fleet from 82 to 118 jets (Record of Decision for Growler Environmental Impact Statement, March 13, 2019) means that training flights will increase into the future. However, the nature of that increase – in terms of more days, hours, or numbers of jets operating simultaneously – and corresponding impacts on realized frequency and level of noise for the Peninsula is highly unclear.

The Olympic Peninsula is a historically, culturally, and ecologically unique place. Olympic National Park, which encompasses a large range of geologically significant and unique features (e.g., mountains, Lake Ozette, coastal beaches), receives more than 3 million visitors every year and has been designated as a World Heritage Site. Eight Native American Tribes call the Peninsula home, with strong historical and current connections and dependencies with wildlife (e.g., salmon, whales) for subsistence and culture. The geologic history of the region has supported creation of unique biota, with no less than 29 species or sub-species of mammal, birds, amphibians and fish that are found only on the Peninsula (1). Extensive historic swathes of large forests and unimpounded rivers with protected headwaters have also provided important landscapes and habitat for forest-dependent species, including multiple species listed under the US Endangered Species Act (ESA), and some of the healthiest salmon runs in the state.

The impacts of noise disturbance on wildlife are generally very poorly researched, although efforts have been increasing in recent years. The effects of noise on humans are better documented, but outdated (e.g., all EPA research related to noise disturbance ended in the mid-1970’s) and geared almost exclusively toward extreme and persistent noise on human health (2, 3). Studies also tend to focus on urban areas (4–7), leaving the impacts of noise on wildlife and people in remote areas minimally investigated; however, as large-scale human use of landscapes (e.g., mining, air traffic, road noise) have become more prevalent and far-reaching, this area of research has become more prominent (8, 9). The science of “soundscapes” has emerged around the recognition that noise can be a critical form of disturbance for wildlife and people, and that the acoustic environment is part of and an indicator of the overall health of ecosystems (10).

A majority of the research related to noise and wildlife has recently been summarized by Shannon et al. 2016, which documents the diverse consequences of noise disturbance from 119 studies on birds, mammals, fish, reptiles and amphibians, and invertebrates. These documented impacts include: avoidance of noisy areas, changes in behavior, increased physiological stress, reduced reproductive success, declines in abundance and occupancy of sites, and changes in species communities and interactions. Research at community and ecosystem scales has demonstrated that noise disturbance can result in shifts in entire bird communities (11, 12) and even alter and disrupt ecosystem functions (13). Although studies that examine impacts on fitness (vs. behavior) of animal are rarer, at least four studies document reductions in breeding success of birds due to different types of noise disturbance (14–16). Notably, one is a recent and

comprehensive field study that examined the impacts of simulated off-highway vehicle noise on endangered Northern spotted owls, and documented increased physiological stress levels and reduced fledging as a result of noise disturbance (17). As acoustically specialized predators, owls may be particularly vulnerable to noise interference on their ability to hunt (8). Similarly, ESA-listed marbled murrelet can be sensitive to disturbance by humans and transportation (18), although the impact of aircraft on murrelet has not been explicitly studied. Overall, research studies on military activity are less common than for industrial and transportation-associated noise (19), leaving large knowledge gaps in evaluating the impact of intermittent and periodically intense overflight events on wildlife.

Noise disturbance also has myriad effects on human health and well-being. As with wildlife, however, the majority of research into the effects of aircraft noise on human health has been for commercial vs. military aircraft. In a 2017 review of the health impacts associated with noise, the Washington State Department of Health noted the “paucity of published research on military aircraft noise” (20). The basis on which to estimate health consequences for military overflights, which differ from commercial aircraft in loudness, duration, and frequency, is therefore currently very poor. However, based on reviews of literature it is understood that negative health effects of unwanted noise begin to manifest (typically as annoyance and related stress responses) in humans when levels rise above 40 db(A) (21). Concentration, memory, cognition, and mental health status can be impaired when noise levels reach 40 - 55 db(A) (20–23). Levels above 55 db(A) are associated with serious cardiovascular health effects, including hypertension, stroke, and risk of ischemic heart disease (20, 21). When noise is experienced in wilderness areas, perception and psychological effects of disturbance can be exacerbated based on the expectation of quiet (24, 25), as well as intermittence and lack of predictability of events (26). Vulnerability to detrimental impacts of noise is believed to vary across individuals and groups (e.g., higher impacts on children and elderly), but these relationships are only poorly documented at present (20).

As we enter the era of unprecedented human alteration of landscapes, protected and wilderness areas around the world are grappling with the challenge of managing acoustic environments that are integral to landscape uses by wildlife and people (9, 27). However, it is impossible to evaluate and manage the impact of something that is unmeasured. The goals of this study, therefore, were to establish baseline noise levels for the Olympic Peninsula by a dominant user of the soundscape, which is military aircraft. The study sought to answer two questions: 1) What are the current noise levels and contributions of different aircraft on the Olympic Peninsula soundscape? and 2) How might these levels change with proposed increases in military training and operations? Answering these questions will facilitate a realistic appraisal of potential impact to residential communities and wildlife, to better inform management and mitigation both now and in the future (28, 29).

Methods

Sites and Data Collection

Three locations on the west side of the Olympic Peninsula were selected for monitoring during 2017 and 2018: Third Beach (elevation 64 m), River Trail (199 m), and Hoh Watershed (28 m) (Figure 1). Third Beach and River Trail are within the Olympic National Park, and were also monitored in 2010 and 2011 as part of a soundscape inventory by the National Park Service (30). The Hoh Watershed site is adjacent

to the National Park boundary near the southern region (i.e., Oil City). Third Beach and Hoh Watershed sites are within the Olympic Military Operations Area (the “MOA”) (Figure 1); the River Trail site is located outside of the MOA, at a distance of 1.8 km from the nearest edge of the MOA boundary. Distances between the three sites are 22 km (Third Beach-Hoh Watershed), 40 km (Hoh Watershed-River Trail), and 51 km (Third Beach-River Trail).

Acoustic data was collected at each site using SongMeter recording units (Wildlife Acoustics, SM4 or SM2), which are well designed to capture a broad range of frequencies. Three recording units were deployed and scheduled to record simultaneously for a minimum of two-week periods in June 2017, September 2017, January 2018, and April 2018. Single-channel recording was used to maximize battery life and recording time, and batteries were changed as needed during the recording periods. Recording was continuous at all sites and periods with the exception of Hoh Watershed in the June 2017, September 2017, and January 2018 periods, where the recorder was scheduled to be off from 2 AM and 4 AM to extend battery life. Microphones were tested using a calibrator (Briel & Kjaer, Model 4230) prior to deployment and on retrieval.

Data Processing and Analysis

From each recording period, 10 days of audio files were processed to identify and classify all aircraft activity that was audible at each location. The 10-day periods were: 6/22/2017-7/1/2017, 9/25/17-10/4/2017, 1/1/2018-1/10/2018, and 4/22/2018-5/1/2018. Audio files were processed using the software program *Audacity*. The spectrogram of files was visually and auditorily inspected to identify any potential aircraft events. Once events were identified in a file, the start and end times were delineated by listening for the point at which the aircraft became audible and then disappeared relative to background noise. Events were then classified as “military”, “commercial”, and “propeller” (or “helicopter”) by listening to the event until the listener was confident of the identification (Figure 2). If there was great uncertainty in identification, listeners could classify events using a first and second choice (e.g., “1-commercial” & “2-military”). Less than 1% ($n=275$) of all flight events were identified using a double classification, and the majority of those were evenly divided between “military-commercial” and “commercial-military”. “Helicopters” could also be difficult to distinguish from “propeller”, but were rare overall. About half of all audio files were initially processed by trained volunteers, and then validated by the project lead or a trained intern to ensure continuity in identification and delineation. The duration of all flight events was calculated along with the time of day, and assembled into a database for analysis of the number of flight events by sampling period, location, date, or hour of the day. The duration of types of different aircraft events was also calculated as the percent time audible (total duration in seconds/recording time in seconds).

Information from the weekly flight notification schedule

(https://www.cnic.navy.mil/regions/cnrnw/installations/nas_whidbey_island/news/news_releases/field-carrier-landing-practice-at-nas-whidbey-island-complex-for.html) was summarized as an indication of flight operations activity from NASWI for comparison with recorded data. The flight notification schedule is of course not an official flight schedule. However, according to the NASWI Complex Growler FEIS, 83% of current operations at Ault Field are Growlers (Table 3-1.3); the flight notifications for Ault Field should be a reasonable indicator of when enhanced or elevated military aircraft activity can be expected in and around the Olympic MOA. The date, location (e.g., Ault Field), and Time Frame of

operations was extracted from the weekly notifications for the one year period most closely corresponding to the year when recording was done (May 28, 2017 – May 27, 2018). The number of Time Frames reported were summarized for each day and location (e.g., “Night to Late Night” = 2 time frames), and the dataset was filtered to focus on activity for Ault Field.

Results

2,814 hours of audio files were processed from the three sites and four sampling periods; the difference from the number of continuous hours during that period (24 hrs*10 days*3 sites*4 periods) is due to no recording from 2-4 AM at the Hoh Watershed in three periods, and one equipment failure that led to loss of 6.5 hours of audio. All calculations of percent time audible were correspondingly corrected for actual recorded time.

Across all hours of recorded data, 4,644 flight events were identified. Of these, 85% were classified as military, 8% commercial, 6% propeller, and <1% were helicopters. As noted above, a very small number of events were classified with some uncertainty, but uncertainty was evenly balanced between different combinations. When calculated as the sum of duration (in seconds), percentages were nearly identical, reflecting the close correlation between number of flight events and total daily duration of time audible ($R^2=0.93$). Mean durations of different types of aircraft events were highly similar (range: 131-142 secs), although the variance was much higher for military flight events (min-max: 4–1400 secs) as compared with other aircraft event types (Figure 3).

For the one-year period from May 28, 2017 – May 27, 2018, flight notifications indicated activity on Ault Field on 118 days (Figure 4). Days where flight activity out of Ault Field was indicated overlapped with recording and processing days by 0.55, or 22 out of 40 recording days. There was a strong and significant correlation between the number of time frames where activity was reported for Ault Field and the average number of flights recorded in that day across all three sites ($R^2=0.48$, $p<0.001$; Figure 5A). The strength of the correlation varied somewhat between the three locations individually, being weakest for the River Trail ($R^2=0.29$, $p<0.001$) and strongest at Third Beach ($R^2=0.54$, $p<0.001$). On the busiest days, we recorded an average of up to 70-85 flight events per location (Figure 5A). However, these did not correspond with the days of highest reported activity at Ault Field, suggesting that substantial on-the-ground impacts can occur even under median numbers of reported timeframes. The distribution of flight events recorded at individual locations was slightly left-skewed, but tended to cluster around 25-50 flights in recorded days (Figure 5B). The maximum number of flight events recorded on a single day at locations were 73 (Hoh Watershed), 104 (River Trail), and 81 (Third Beach).

Military aircraft constituted by far the largest majority of audible aircraft at most hours of the day, representing 85% of the total duration of time aircraft noise was recorded; commercial aircraft and propeller/helicopter craft represented similar percentages (8% and 7% respectively) of the total time audible (Figure 6). Although recordings were conducted on an approximately normal ratio of weekend days and weekdays (1:4), only 7.5% of military flights were documented on weekends. Nearly three-quarters (74%) of all military flights were documented between 9 AM-5 PM, 19% were between 5–10 PM, and 5% were between 10 PM-7 AM (data not shown).

All three locations displayed similar daily patterns in military flight activity (i.e., strong peak during the middle of the day) but varied in the total percent time audible (Table 1). Across all recording days, the two coastal locations experienced audible military aircraft an average of 12% (range: 9-17%) of the time during daytime hours between 9AM-5 PM, while military aircraft were audible an average of 9% (range: 6-14%) of those same hours at River Trail. In contrast, the next largest contributor of aircraft noise was commercial, which were audible on average only 0.5% (range: 0.1-1.2%) of the same hours (Table 1). The duration of time in each day and hour that military aircraft were audible was highly correlated across the three locations, indicating flight activities impacted a large geographic area at any given time (Figure 7). Correlations were stronger between the two coastal sites than for the coastal-interior site pairs.

Discussion and Implications

In this study, we used on-the-ground acoustic monitoring to evaluate the impact of different types of aircraft on the Olympic Peninsula soundscape, with the intention of providing context and guidance with respect to increased military operations in the future. Toward that goal, we tried to calculate metrics that advance the goal of assessing impacts of military overflights on people and wildlife, which are currently understudied and poorly understood (19–21). With the exception being the loss of only one audio file over an entire year, we also demonstrate feasibility of on-the-ground acoustic monitoring to reliably assess changes in military operations now and in the future. It should be mentioned for our results that the 6.5 hr file loss occurred during the day (when most flight activity was recorded), potentially representing a relatively substantial loss of information. Based on flight activity recorded earlier in the day at that location and the correlation relationship with other locations during that timeframe, we estimate that the missing audio data likely included 25-40 additional military and 1-2 commercial flight events (Figure 5A). However, this only increases confidence that our overall results are a fair reflection of fact, and may be conservative.

We found that military aircraft are a dominant contributor to the soundscape of the Olympic Peninsula, representing 85% of the total time aircraft are audible. Percent time audible was substantial during daytime hours, particularly at the coastal sites, which averaged 12% audible during daytime hours across all 40 recording days. However, to achieve this average level meant that on some individual days the percent time audible during these hours was far greater (e.g., 49-52% of the time). Individual locations can experience in the range of up to 80-100 events in a single day. In areas where residents (and tourists) have an expectation of quiet, experiencing noise at these levels is likely to occur as even more intrusive or disruptive than in urbanized settings (24, 25). It also stands, therefore, that increases in military training operations and activities (e.g., Record of Decision for Growler Environmental Impact Statement, March 13, 2019) may result in fundamental changes to the Olympic Peninsula soundscape. For example, given knowledge that daytime percent time audible approaches or exceeds 20% on a consistent basis in some locations, we can ask if additional operations would increase that percentage? Alternatively, increases might result instead in more hours of the day or numbers of days per year impacted. Using the baseline data from this study to establish daily, weekly, and geographic patterns of activity, it is now possible to more specifically consider what those increases would look like, and whether they will represent sustainable or reasonable exposure levels for wilderness areas and residential communities.

Audible events were not evenly experienced across different locations, as we demonstrated differences in the numbers of flight events and percent time audible for the two coastal locations as compared with the interior location just outside of the MOA. Since only three locations were monitored, it is impossible to know how impacts are distributed across the entire MOA. However, impact on a daily and hourly basis was correlated at distances of 22, 40, and 51 km apart. Although the range at which aircraft can be detected will depend on speed, altitude, and power of the particular aircraft as well as terrain and atmospheric conditions, local information from residents that live around NASWI suggests that Growlers are audible at a distance of 14-19 km away. This does raise some possibility of spatio-temporal autocorrelation of detection of aircraft events in our data collection and processing, particularly between the two coastal sites that were 22 km distant. However, the fact that even sites that were 40 and 51 km from each other were well correlated indicates the broad geographic scope of activities on any given day and time period. Additional monitoring over larger areas would better describe how localized impacts are at any given time, and if there are “hotspots” where communities, visitors, and wildlife may experience greater exposure to duration, intensity, or number of disturbance events.

Our data showed that areas outside of the MOA are clearly impacted, with the Hoh River location averaging 9-12% audible during daytime hours (with a maximum of 52% recorded on one sampling day-hour). The Airspace Noise Analysis for the Olympic Military Operations Area (Appendix J) in the NWT EIS/OEIS indicates that pilots typically plan to complete maneuvers within 3 nm of the boundary of the MOA. That the River Trail location, positioned 1.8 km outside the MOA, receives such consistent noise from military aircraft indicates that the noise footprint extends well beyond the MOA. It should be noted that all monitoring locations were either in the Olympic National Park or extremely close to the Park, and therefore reflect the range of exposure that visitors to the region are likely to experience currently. Two of the monitoring locations (Third Beach and Hoh Watershed) are also highly proximate to the Quileute Tribe and Hoh Nation, offering a coarse estimate of potential impact for people of those Tribal Nations.

An important outcome of this study was demonstrating feasibility in identifying different types of aircraft from audio recordings, that were processed using widely available software. We then used these data to calculate metrics relevant for people and wildlife, which do not experience and respond to noise and disturbance as calculated by long-term averages (i.e., the 24 hr day-night average sound level that is the standard applied by the Federal Aviation Administration). This is particularly true when evaluating the impact of noise and disturbance in rural and wilderness areas, which provide important habitat for valued and even endangered species (Figure 8) as well as being areas where people expect to experience quiet (24, 25). Developing and measuring metrics that reflect the impact of noise in wilderness and rural areas is fundamental to assessing impact. In this study, we have mainly relied on the number of flight events (i.e., disturbance events) and percent time audible, but other metrics that would be valuable in evaluating impact include the number of events that exceed certain dB or dB(A) thresholds, noise profiles for different locations around the Peninsula (e.g., the hourly distribution of L_{50}) (30), and numbers of events that are likely to disrupt sleep, classroom-based learning, or recreational activities. Our dataset includes the potential to create and examine these types of metrics, which we hope to do in a future summary.

By demonstrating workability and utility of this approach, we hope to encourage the use of on-the-ground monitoring as a critical evaluation and mitigation strategy. It is clearly impossible to mitigate impacts that are not quantified. By assessing the realized contribution of military aircraft to the soundscape based on

factors like geography and time of day, we can begin to consider where possible mitigation strategies might focus. These might include approaches such as working with residents to set upper limits on the total percent time all military aircraft will be audible and monitoring use against that threshold. Alternatively, metrics can be used to communicate and set expectations for a community, such as informing tourists about the noisiest areas and times of day to adjust their activities as needed. Critically, on-the-ground monitoring evaluates the impact of combined users on a space. For example, although NASWI may contribute only partially to the overall noise and traffic in the MOA, residents, tourists, and wildlife experience the totality of disturbance (regardless of the specific source). To evaluate impact based on contribution of a single user (e.g., the NWTTS EIS/OEIS) invites the tragedy of the commons, and runs counter to the need to manage soundscapes as other types of common-pool resources are managed (29).

References

1. Gavin DG, Brubaker LB (2014) *Late Pleistocene and Holocene environmental change on the Olympic Peninsula, Washington* (Springer, New York).
2. Environmental Protection Agency (1973) *Public health and welfare criteria for noise, July 27, 1973*. (U.S. Environmental Protection Agency, Office of Noise Abatement and Control, Washington).
3. Environmental Protection Agency (1974) *Information on levels of environmental noise requisite to protect public health and welfare with an adequate margin of safety* (U.S. Environmental Protection Agency, Office of Noise Abatement and Control, Washington, D.C.).
4. Southworth M (1969) The sonic environment of cities. *Environ Behav* 1(1):49–70.
5. Warren PS, Katti M, Ermann M, Brazel A (2006) Urban bioacoustics: it's not just noise. *Anim Behav* 71(3):491–502.
6. Ross Z, et al. (2011) Noise, air pollutants and traffic: Continuous measurement and correlation at a high-traffic location in New York City. *Env Res* 111(8):1054–1063.
7. Kuehne LM, Padgham BL, Olden JD (2013) The soundscapes of lakes across an urbanization gradient. *PLoS One* 8(2):e55661.
8. Barber JR, Crooks KR, Fristrup KM (2010) The costs of chronic noise exposure for terrestrial organisms. *Trends Ecol Evol* 25(3):180–189.
9. Barber JR, et al. (2011) Anthropogenic noise exposure in protected natural areas: estimating the scale of ecological consequences. *Landscape Ecol* 26(9):1281–1295.
10. Pijanowski BC, et al. (2011) Soundscape ecology: the science of sound in the landscape. *BioScience* 61(3):203–216.
11. Herrera-Montes MI, Aide TM (2011) Impacts of traffic noise on anuran and bird communities. *Urban Ecosystems* 14(3):415–427.
12. Francis CD, Ortega CP, Cruz A (2011) Noise pollution filters bird communities based on vocal frequency. *PLoS ONE* 6(11):e27052.
13. Francis CD, Kleist NJ, Ortega CP, Cruz A (2012) Noise pollution alters ecological services: enhanced pollination and disrupted seed dispersal. *P Roy Soc B-Biol Sci* 279(1739):2727–2735.
14. Halfwerk W, Holleman LJM, Lessells CkM, Slabbekoorn H (2011) Negative impact of traffic noise on avian reproductive success. *J Appl Ecol* 48(1):210–219.
15. Schroeder J, Nakagawa S, Cleasby IR, Burke T (2012) Passerine Birds Breeding under Chronic Noise Experience Reduced Fitness. *PLoS ONE* 7(7):e39200.

16. Kight CR, Saha MS, Swaddle JP (2012) Anthropogenic noise is associated with reductions in the productivity of breeding Eastern Bluebirds (*Sialia sialis*). *Ecological Applications* 22(7):1989–1996.
17. Hayward LS, Bowles AE, Ha JC, Wasser SK (2011) Impacts of acute and long-term vehicle exposure on physiology and reproductive success of the northern spotted owl. *Ecosphere* 2(6):art65.
18. Long LL, Ralph CJ (1998) *Regulation and observations of human disturbance near nesting Marbled Murrelets* (USDA Forest Service, Pacific Southwest Research Station, Redwood Sciences Institute).
19. Shannon G, et al. (2016) A synthesis of two decades of research documenting the effects of noise on wildlife: Effects of anthropogenic noise on wildlife. *Biological Reviews* 91(4):982–1005.
20. Fox J, Morris L (2017) *A Summary of the Association Between Noise and Health* (Washington State Department of Public Health, Olympic, Washington).
21. Smith JW, Pijanowski BC (2014) Human and policy dimensions of soundscape ecology. *Global Environmental Change* 28:63–74.
22. Stansfeld SA, et al. (2005) Aircraft and road traffic noise and children’s cognition and health: a cross-national study. *The Lancet* 365(9475):1942–1949.
23. Stansfeld SA, et al. (2009) Aircraft and road traffic noise exposure and children’s mental health. *Journal of Environmental Psychology* 29(2):203–207.
24. Mace BL, Bell PA, Loomis RJ (2004) Visibility and Natural Quiet in National Parks and Wilderness Areas: Psychological Considerations. *Environment and Behavior* 36(1):5–31.
25. Bruce NS, Davies WJ (2014) The effects of expectation on the perception of soundscapes. *Applied Acoustics* 85:1–11.
26. Kjellberg A (1990) Subjective, behavioral and psychophysiological effects of noise. *Scandinavian journal of work, environment & health*.
27. Krause B, Gage SH, Joo W (2011) Measuring and interpreting the temporal variability in the soundscape at four places in Sequoia National Park. *Landscape Ecol* 26(9):1247–1256.
28. Dumyahn SL, Pijanowski BC (2011) Soundscape conservation. *Landscape Ecol* 26(9):1327–1344.
29. Dumyahn SL, Pijanowski BC (2011) Beyond noise mitigation: managing soundscapes as common-pool resources. *Landscape Ecol* 26(9):1311–1326.
30. Lee C, MacDonald J (2016) *Olympic National Park: Acoustic Monitoring Winter 2010* (National Park Service, Fort Collins, Colorado).

Figures and Tables



Figure 1. Locations of the three monitoring sites and proximity to the Olympic Military Operations Area. The Third Beach and River Trail sites (red symbols) are within the Olympic National Park, and were monitored by the National Park Service as part of a soundscape inventory in 2010 and 2011. The Hoh Watershed site is adjacent to but not within the National Park boundary (e.g., proximate to Oil City).

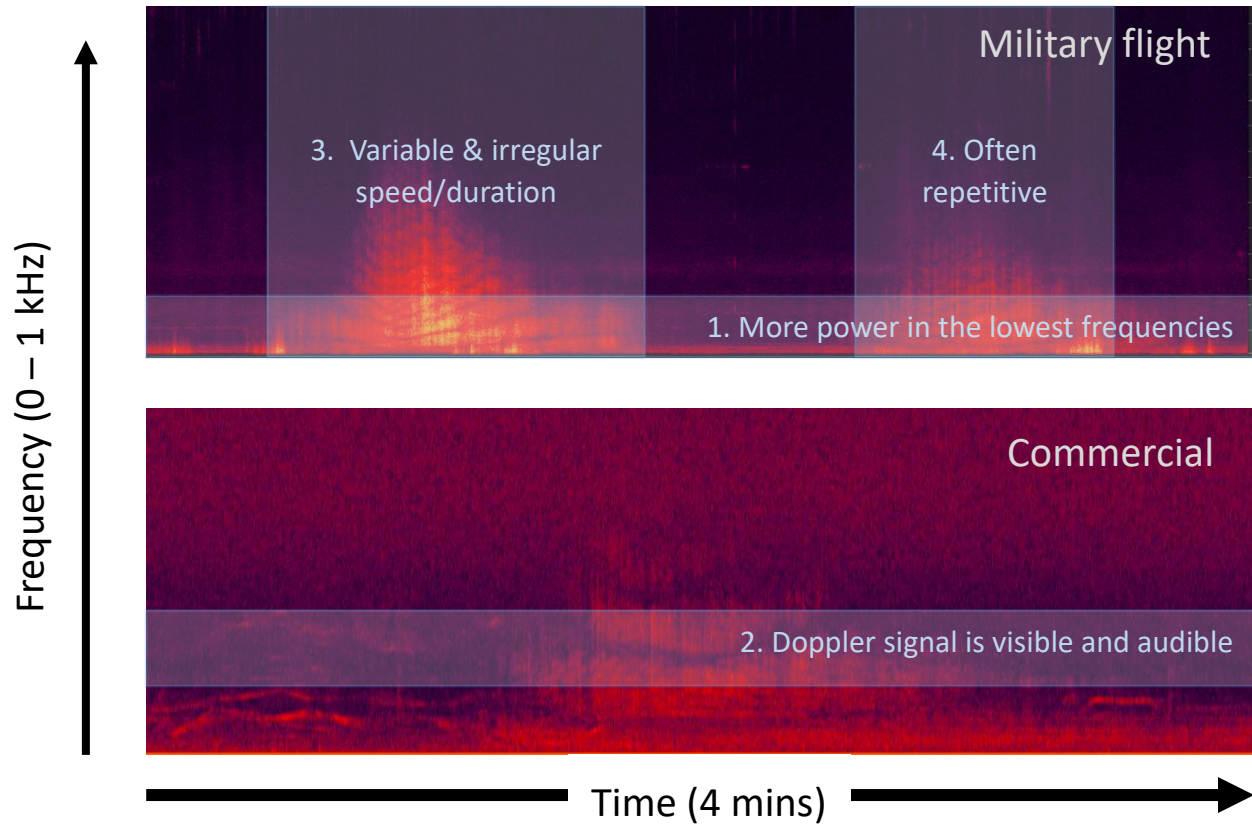


Figure 2. Contrasting spectrograms of typical flights classified as “military” (upper) and “commercial” (lower) demonstrate the ways in which listeners visually and auditorily identified aircraft events. Military aircraft typically had greater power in the lowest frequencies, variable and irregular speed and duration, sudden onsets, and often occurred in clusters. The Doppler signal is also typically compressed compared with commercial aircraft that traveled at more continuous speeds.

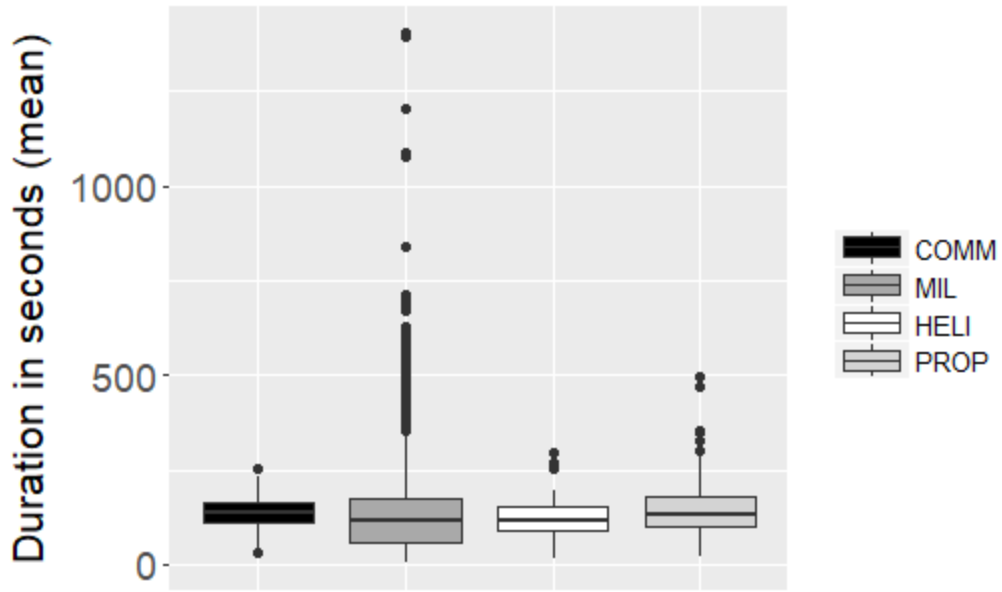


Figure 3. Duration of different flight event types across all hours of processed audio data [boxes represent the first and third quartiles, and whiskers extend to 1.5 times the interquartile range]. Aircraft types are coded as: Commercial (COMM), Military (MIL), Helicopter (HELI), and Propeller (PROP).

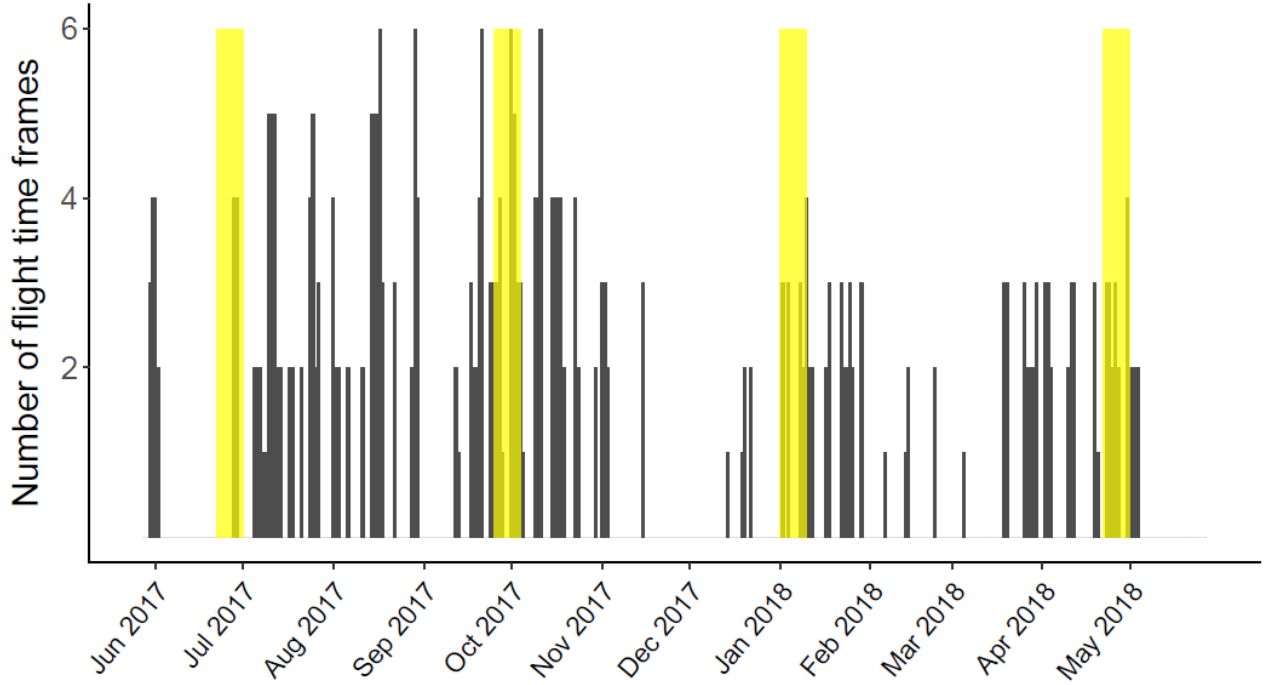


Figure 4. Number of time frames of activity by day (dark grey bars) published in the flight notification schedule for Ault Field for the period of May 28, 2017 – May 27, 2018. Yellow shading indicates days when recorded audio data was collected and processed for the three sites.

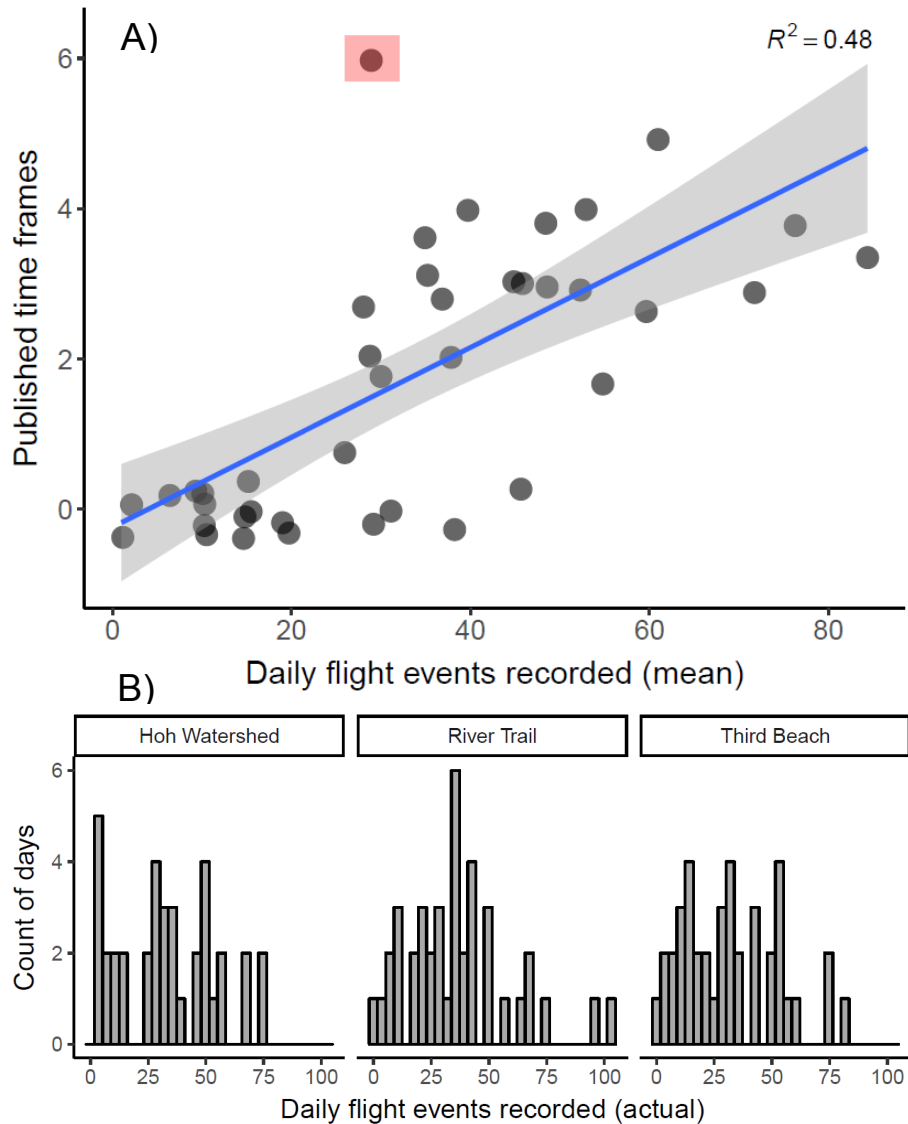


Figure 5. A) Relationship between number of time frames when activity was indicated for Ault Field and the average number of military flights recorded across the three monitoring sites on that day. Blue shading shows the 95% confidence interval for the regression, which was significant ($p < 0.001$). Points are jittered slightly to avoid overplotting; the single red shaded point is the day where equipment failure resulted in 6.5 hours of missing daytime audio at one location. B) Distribution of the number of actual daily flight events recorded at the Hoh Watershed, River Trail, and Third Beach locations over the 40 days of recording.

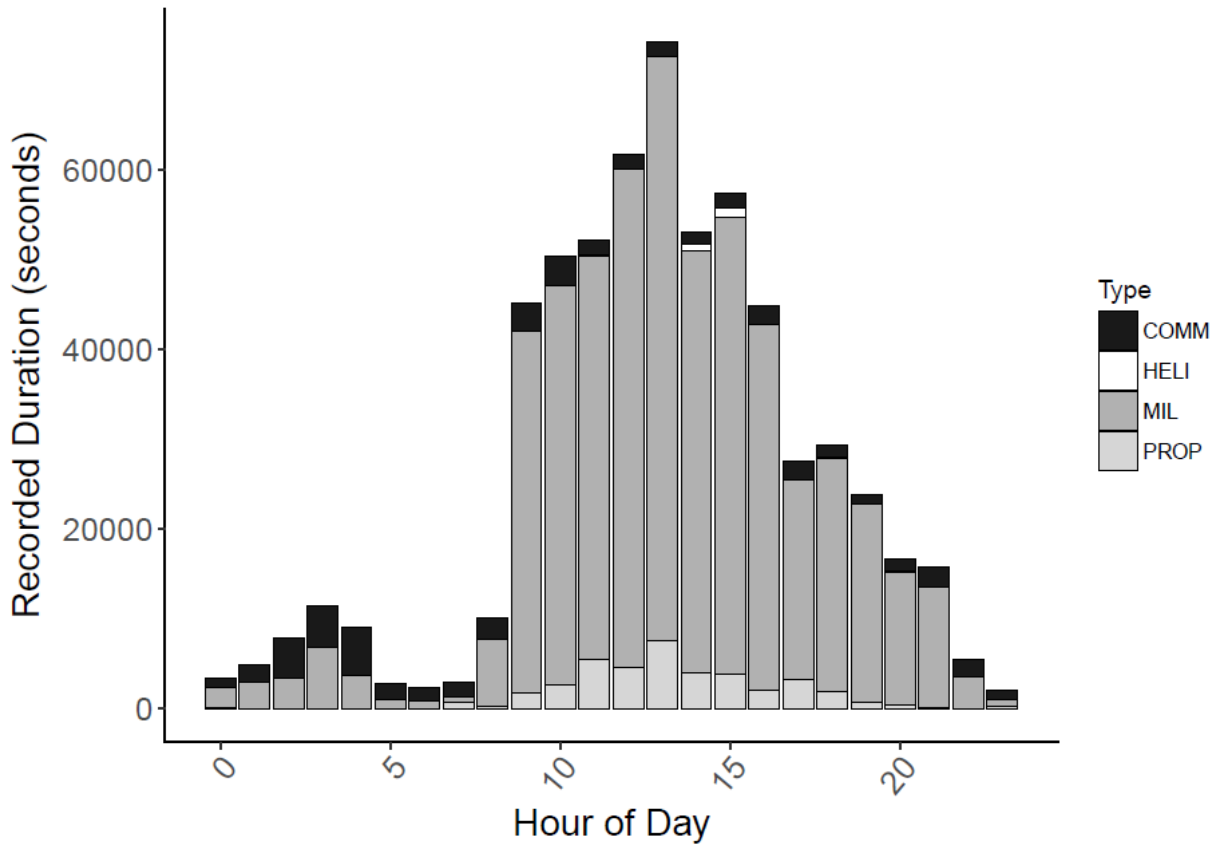


Figure 6. Contribution of different aircraft to the total duration of seconds of recorded audible time by hour of the day (total duration is across all three locations and four sampling periods). Aircraft types are coded as: Commercial (COMM), Military (MIL), Helicopter (HELI), and Propeller (PROP).

Table 1. Percent time audible for military and commercial aircraft by the hour of the day. Calculations are based on all time that aircraft were audible and the actual recording time at that location and hour (i.e., corrected for time(s) recorder were off).

	Hour of day																							
	0	1	2	3	4	5	6	7	8	9	10	11	12	13	14	15	16	17	18	19	20	21	22	23
Military aircraft	0	1	2	3	4	5	6	7	8	9	10	11	12	13	14	15	16	17	18	19	20	21	22	23
<i>Third Beach</i>	0.8	0.5	0.5	1.5	0.8	0.2	0.2	0.1	2.5	10.7	10.4	10.4	13.3	17.3	11.2	14.3	8.5	4.0	6.8	4.6	2.4	2.9	0.7	0.3
<i>Hoh Watershed</i>	0.4	0.4	0.5	0.8	0.4	0.2	0.1	0.1	1.7	10.7	10.6	12.0	15.6	16.3	9.7	14.1	10.4	5.9	7.0	5.4	4.0	3.6	0.6	0.4
<i>River Trail</i>	0.2	1.3	1.6	3.0	1.4	0.2	0.3	0.2	2.6	7.8	9.5	9.1	11.1	14.0	9.7	9.8	6.4	4.0	5.5	4.1	3.0	2.9	1.1	0.0
	Hour of day																							
Commercial aircraft	0	1	2	3	4	5	6	7	8	9	10	11	12	13	14	15	16	17	18	19	20	21	22	23
<i>Third Beach</i>	0.1	0.5	3.6	4.2	1.9	0.5	0.1	0.2	0.7	0.9	0.6	0.4	0.4	0.8	0.3	0.7	0.5	0.3	0.1	0.3	0.3	0.6	0.8	0.2
<i>Hoh Watershed</i>	0.4	0.7	1.3	1.0	0.8	0.5	0.5	0.7	0.6	0.7	1.2	0.8	0.4	0.2	0.1	0.6	0.5	0.7	0.5	0.1	0.3	0.5	0.1	0.2
<i>River Trail</i>	0.1	0.4	1.3	1.0	0.9	0.3	0.2	0.2	0.5	0.6	0.5	0.1	0.2	0.2	0.2	0.1	0.3	0.3	0.2	0.2	0.3	0.4	0.6	0.2

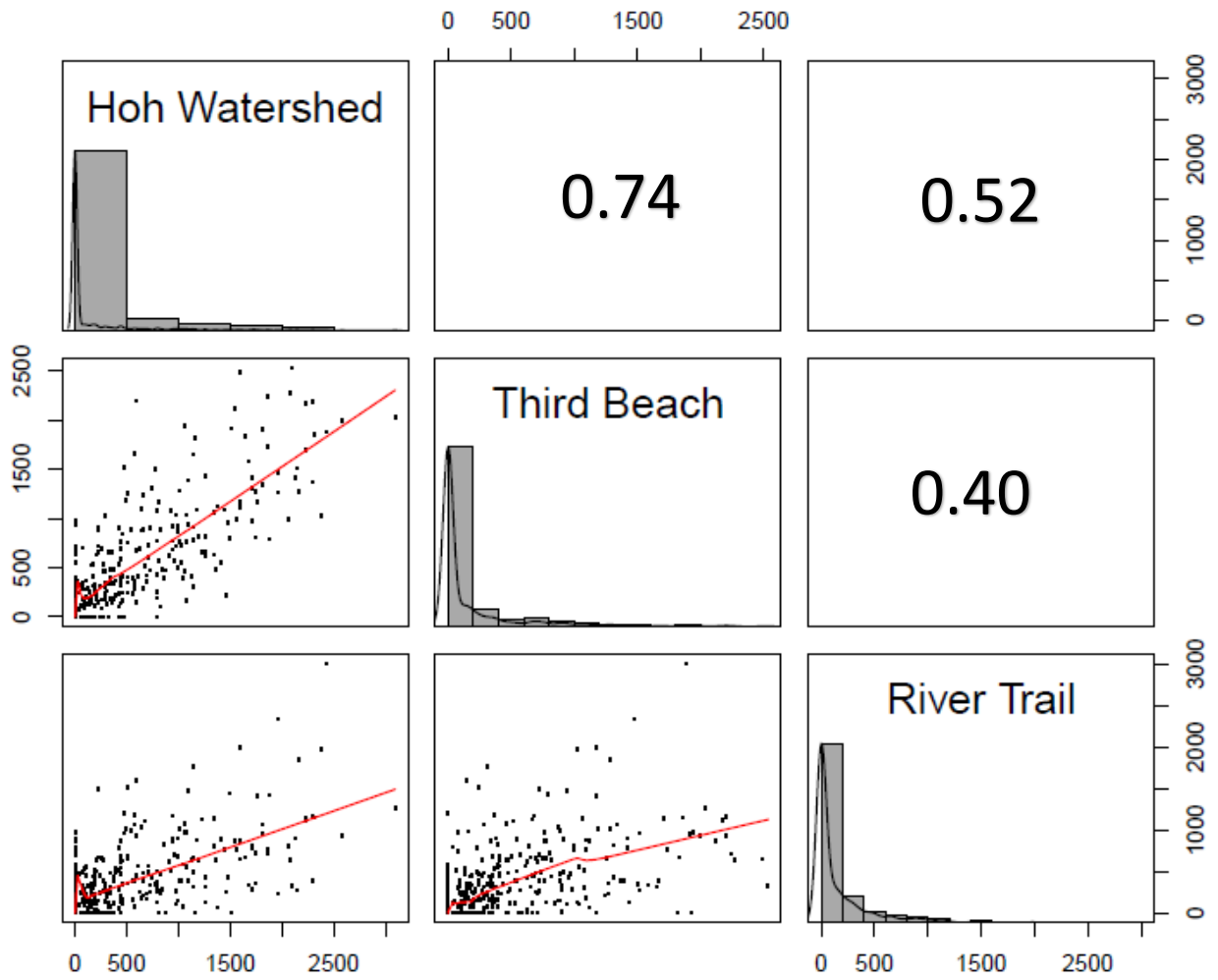


Figure 7. Correlation matrix (with Pearson's R^2 coefficient) based on the duration of military aircraft events recorded at the three different locations by date and hour of each recording day, and distributions of the duration of events for that location. All correlations were significant ($p < 0.001$).

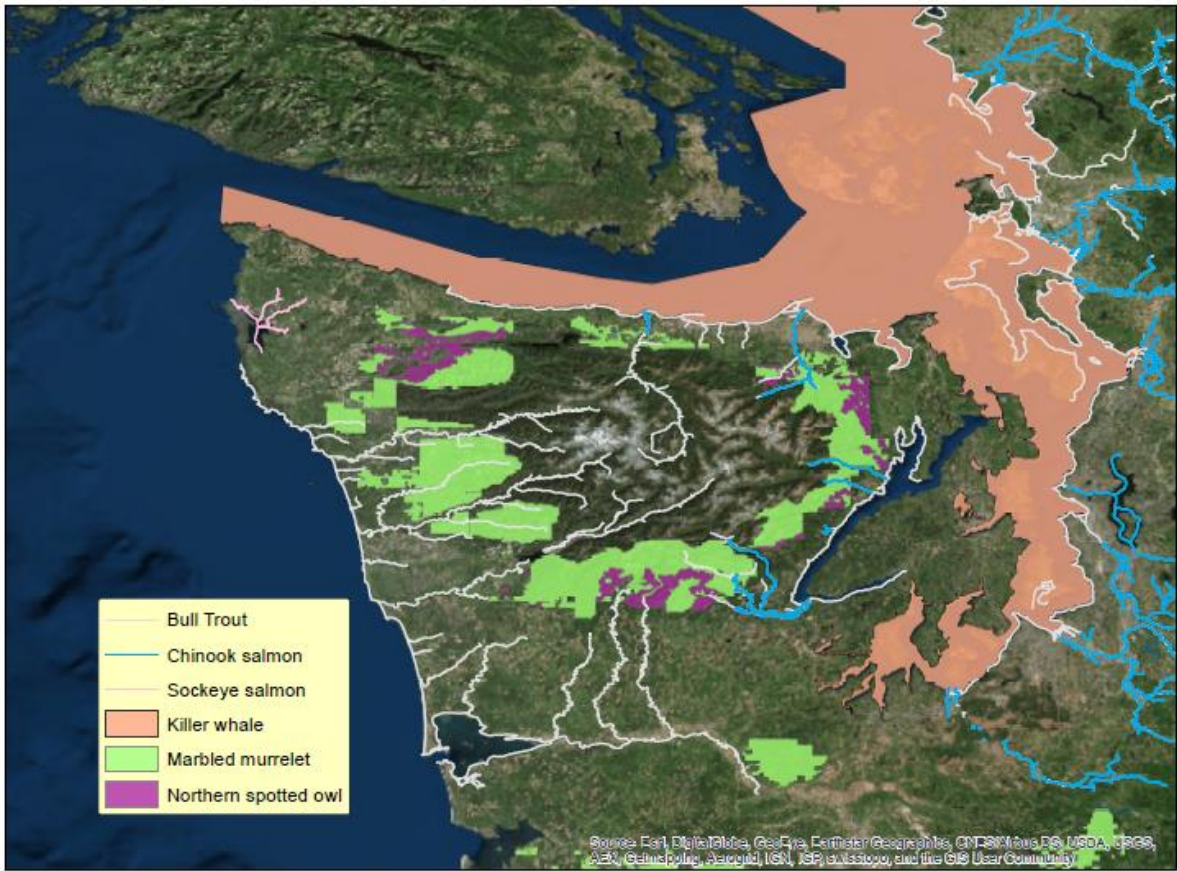


Figure 8. The Olympic Peninsula region with critical habitat for all species currently listed as Threatened or Endangered under the Endangered Species Act.